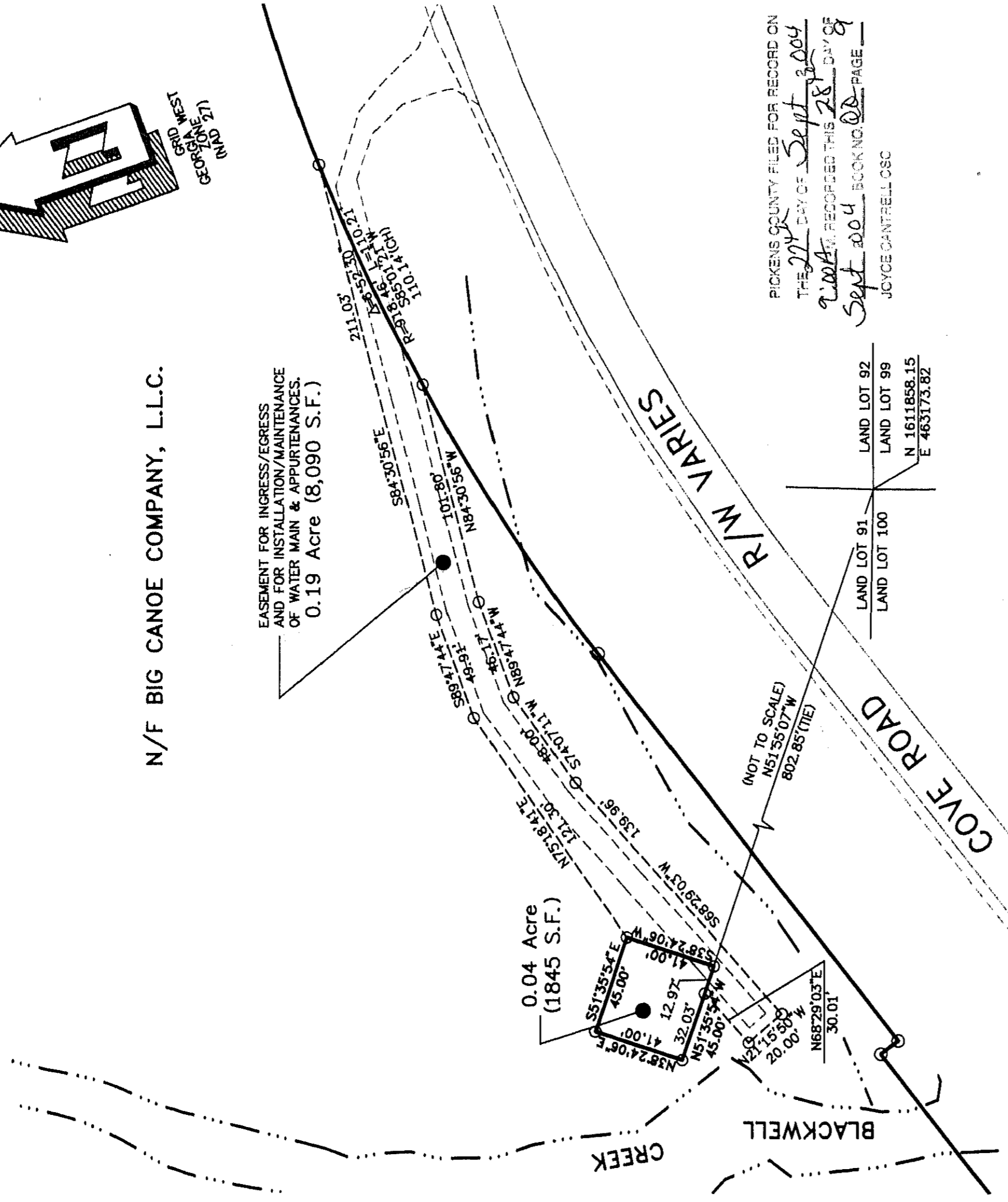


N/F BIG CANOE COMPANY, L.L.C.

EASEMENT FOR INGRESS/EGRESS AND FOR INSTALLATION/MAINTENANCE OF WATER MAIN & APPURTENANCES. 0.19 Acre (8,090 S.F.)



PICKENS COUNTY FILED FOR RECORD ON THE 27th DAY OF Sept 2004. RECORDED THIS 28th DAY OF Sept 2004. BOOK NO. 008 PAGE 9. JOYCE GANTRELL OSC

PICKENS COUNTY LAND DEVELOPMENT OFFICE APPROVED [Signature] DEVELOPMENT OFFICER DATE Sept 24, 2004

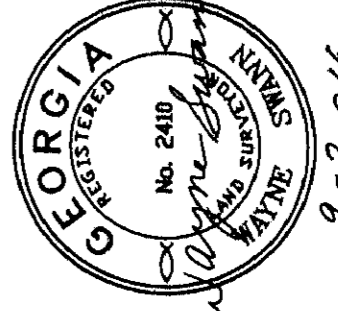
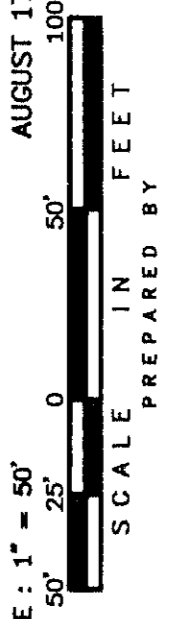
THE INFORMATION SHOWN HEREON WAS TAKEN FROM PREVIOUS PLATS GENERATED BY THIS FIRM. NO ADDITIONAL FIELD SURVEYING HAS BEEN UNDERTAKEN BY CRANSTON, ROBERTSON & WHITEHURST, P.C. TO VERIFY THE DIMENSIONS NOR AREA.

COMPILED PLAT OF BLACKWELL CREEK PUMP STATION TRACT

PREPARED FOR

BIG CANOE UTILITIES CO., INC.

PROPERTY LOCATED IN LAND LOT 91, 2nd SECTION 5th DISTRICT, PICKENS COUNTY, GEORGIA. SCALE: 1" = 50'. AUGUST 17, 2004



Cranston, Robertson & Whitehurst, P.C.

452 ELLIS STREET ENGINEERS PLANNERS P.O. DRAWER 2546 AUGUSTA, GEORGIA 30903 SURVEYORS PH: (706) 722-1588 EMAIL: crw@crwpc.com FACSIMILE: (706) 722-8379

9-2-04