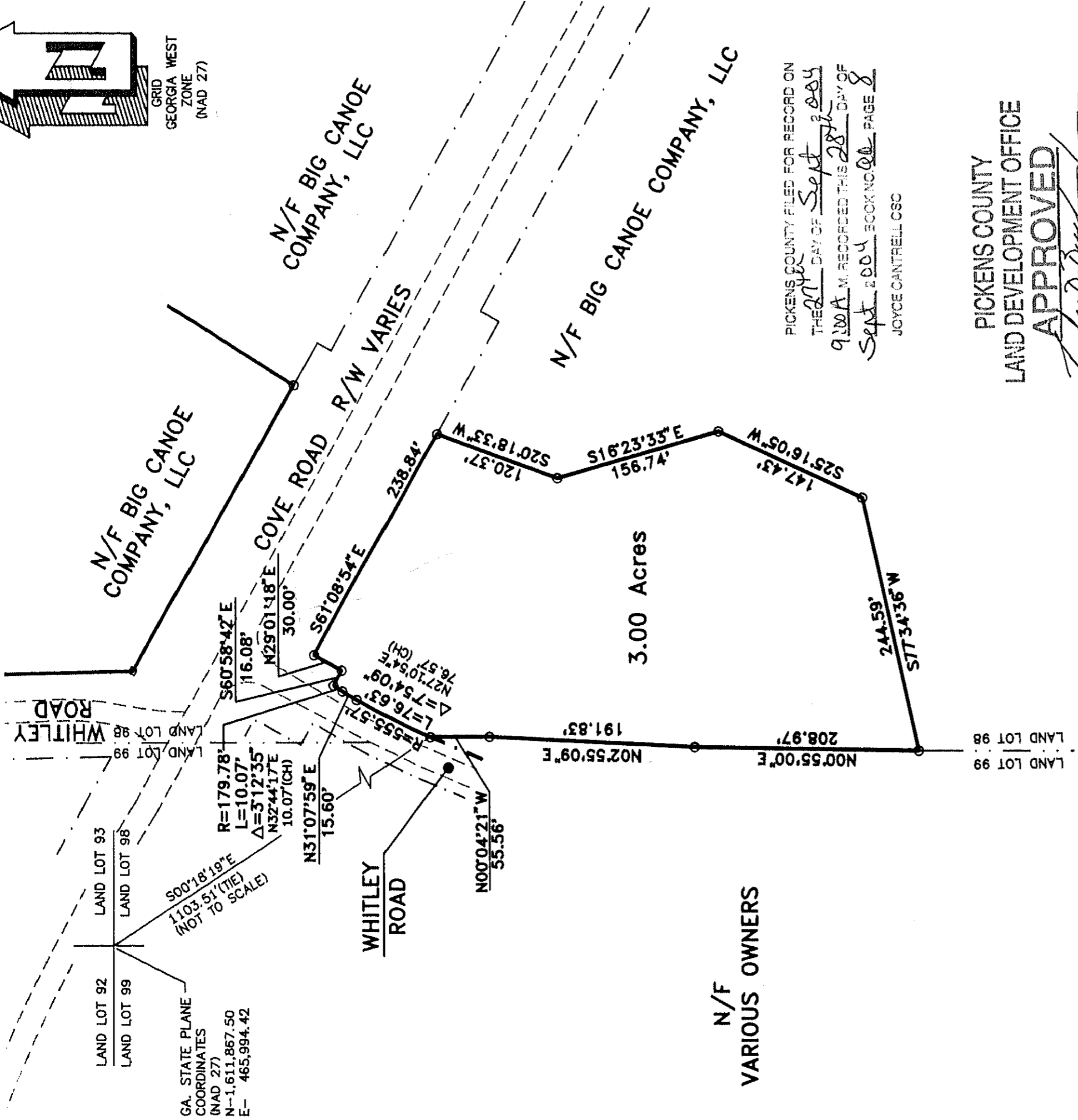


GRID
GEORGIA WEST
ZONE
(NAD 27)



GA. STATE PLANE
COORDINATES
(NAD 27)
N - 1,611,867.50
E - 465,994.42

R=179.78
L=10.07
Δ=312°35'
N324°17'E
10.07(CH)

WHITLEY
ROAD

COVE ROAD
R/W VARIES

N/F BIG CANOE
COMPANY, LLC

N/F BIG CANOE
COMPANY, LLC

N/F BIG CANOE COMPANY, LLC

N/F
VARIOUS OWNERS

3.00 Acres

PICKENS COUNTY FILED FOR RECORD ON
THE 27th DAY OF Sept 2004
9:00 A.M. RECORDED THIS 28th DAY OF
Sept 2004 BOOK NO. 000 PAGE 8
JOYCE CANTRELL CSC

PICKENS COUNTY
LAND DEVELOPMENT OFFICE
APPROVED
DEVELOPMENT OFFICER
DATE Sept 24, 2004

THE INFORMATION SHOWN HEREON WAS TAKEN FROM PREVIOUS
PLATS GENERATED BY THIS FIRM. NO ADDITIONAL FIELD SURVEYING
HAS BEEN UNDERTAKEN BY CRANSTON, ROBERTSON & WHITEHURST,
P.C. TO VERIFY THE DIMENSIONS NOR AREA.

COMPILED PLAT
OF

BLACKWELL CREEK WATER TREATMENT PLANT SITE

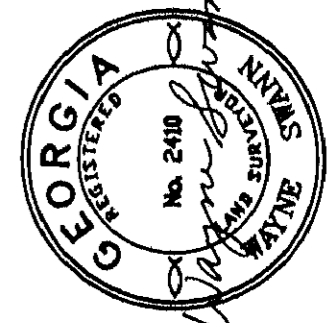
PREPARED FOR

BIG CANOE UTILITIES CO., INC.

PROPERTY LOCATED IN LAND LOTS 93 AND 98, 2nd SECTION 4th DISTRICT

PICKENS COUNTY, GEORGIA

SCALE : 1" = 100'



Wayne Wayne

9-2-04

PREPARED BY

Cranston, Robertson & Whitehurst, P.C.

452 ELLIS STREET - P.O. DRAWER 2546 - AUGUSTA, GEORGIA 30903
ENGINEERS - PLANNERS - SURVEYORS
PH: (706) 722-1588 EMAIL: crw@crwpc.com FACSIMILE: (706) 722-8379

04-315(WTP)