

PICKENS COUNTY
LAND DEVELOPMENT OFFICE
APPROVED
Chad B. ...
DEVELOPMENT OFFICER
DATE Nov 16, 2004

COMPILED EASEMENT PLAT
PREPARED FOR

BIG CANOE UTILITIES CO., INC.

SHOWING EASEMENTS TO BE OBTAINED ALONG RIGHTS OF WAY OF PICKENS COUNTY,
LOCATED IN LAND LOTS 91, 92, 99, 98, 93 & 60, 2nd SECTION 4th DISTRICT,

PICKENS COUNTY, GEORGIA

SCALE: 1" = 100' AUGUST 25, 2004

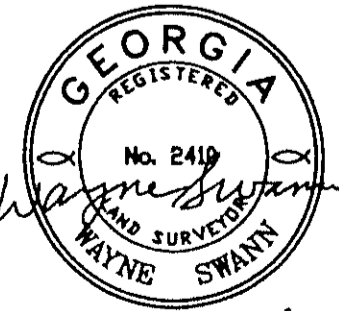


SCALE IN FEET
PREPARED BY

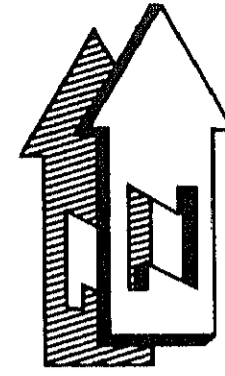


Cranston, Robertson & Whitehurst, P.C.

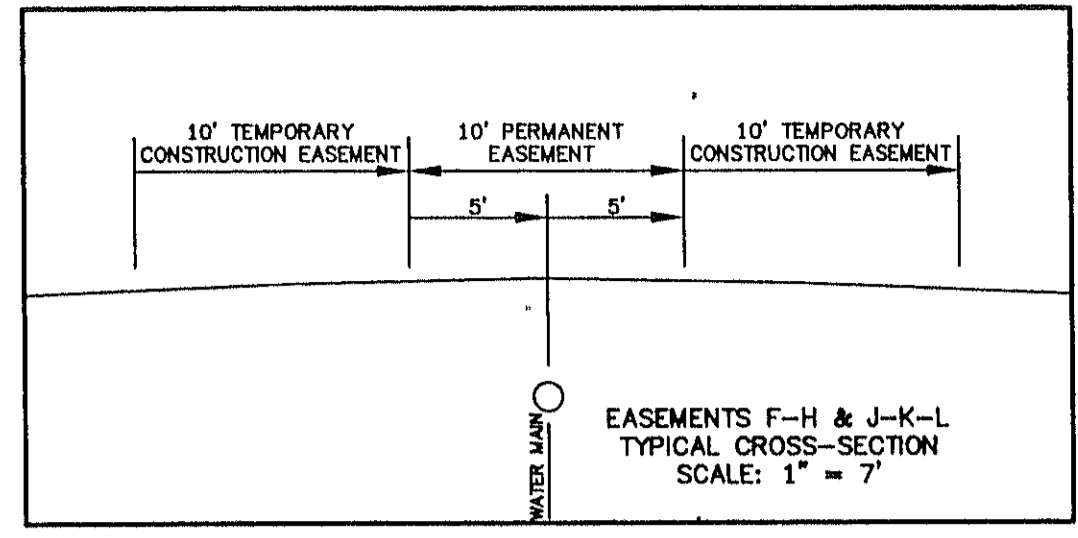
452 ELLIS STREET - P.O. DRAWER 2546 - AUGUSTA, GEORGIA 30903
ENGINEERS - PLANNERS - SURVEYORS
PH: (706) 722-1588 EMAIL: crw@crwpc.com FACSIMILE: (706) 722-8379



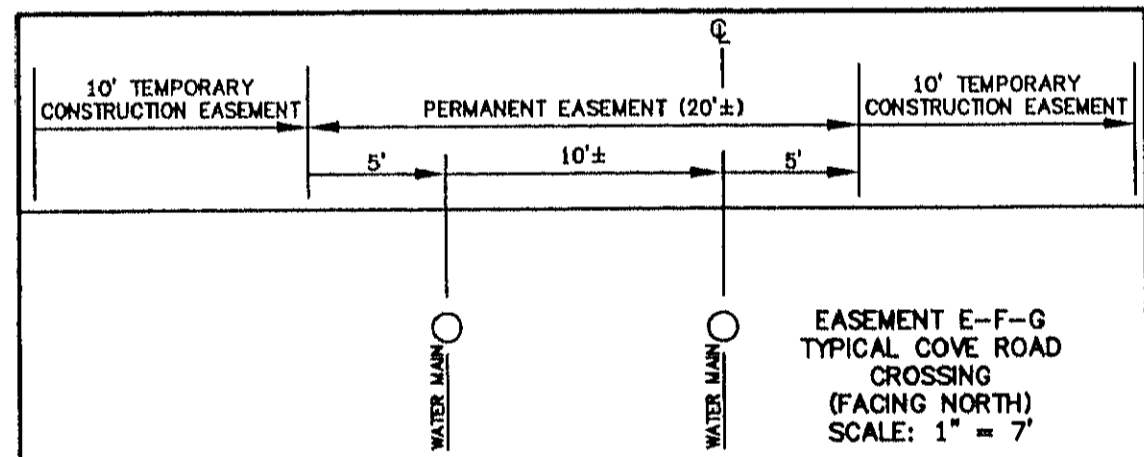
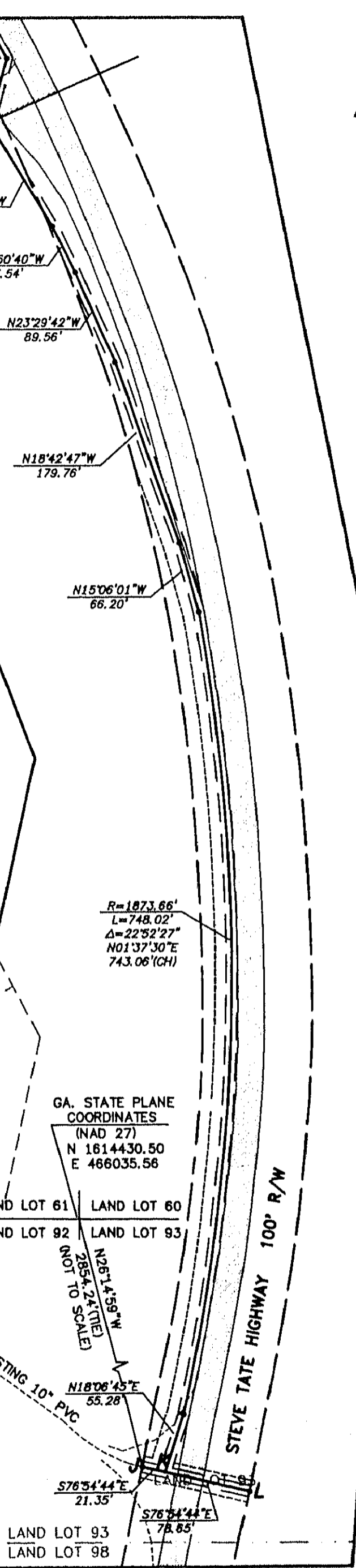
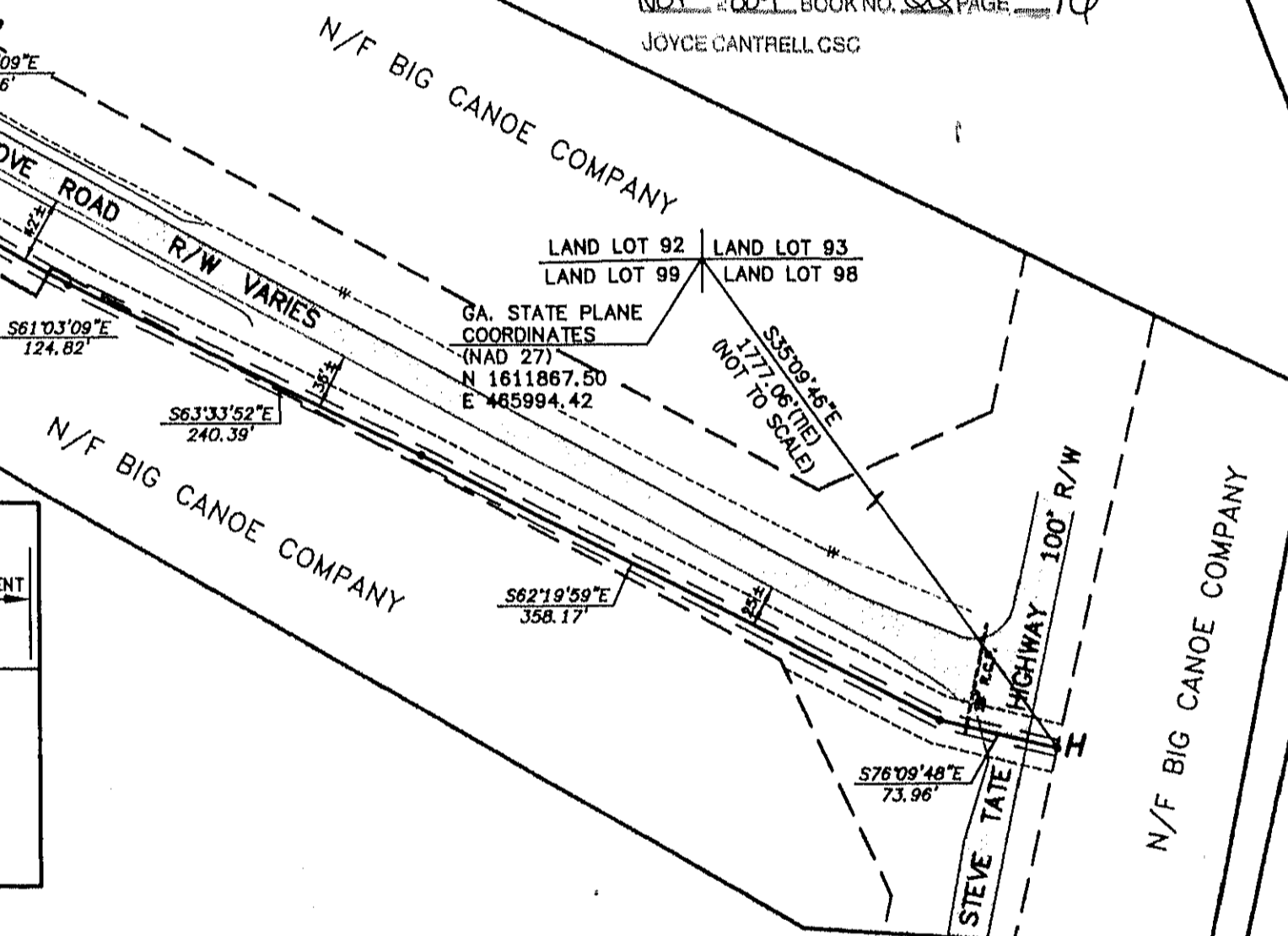
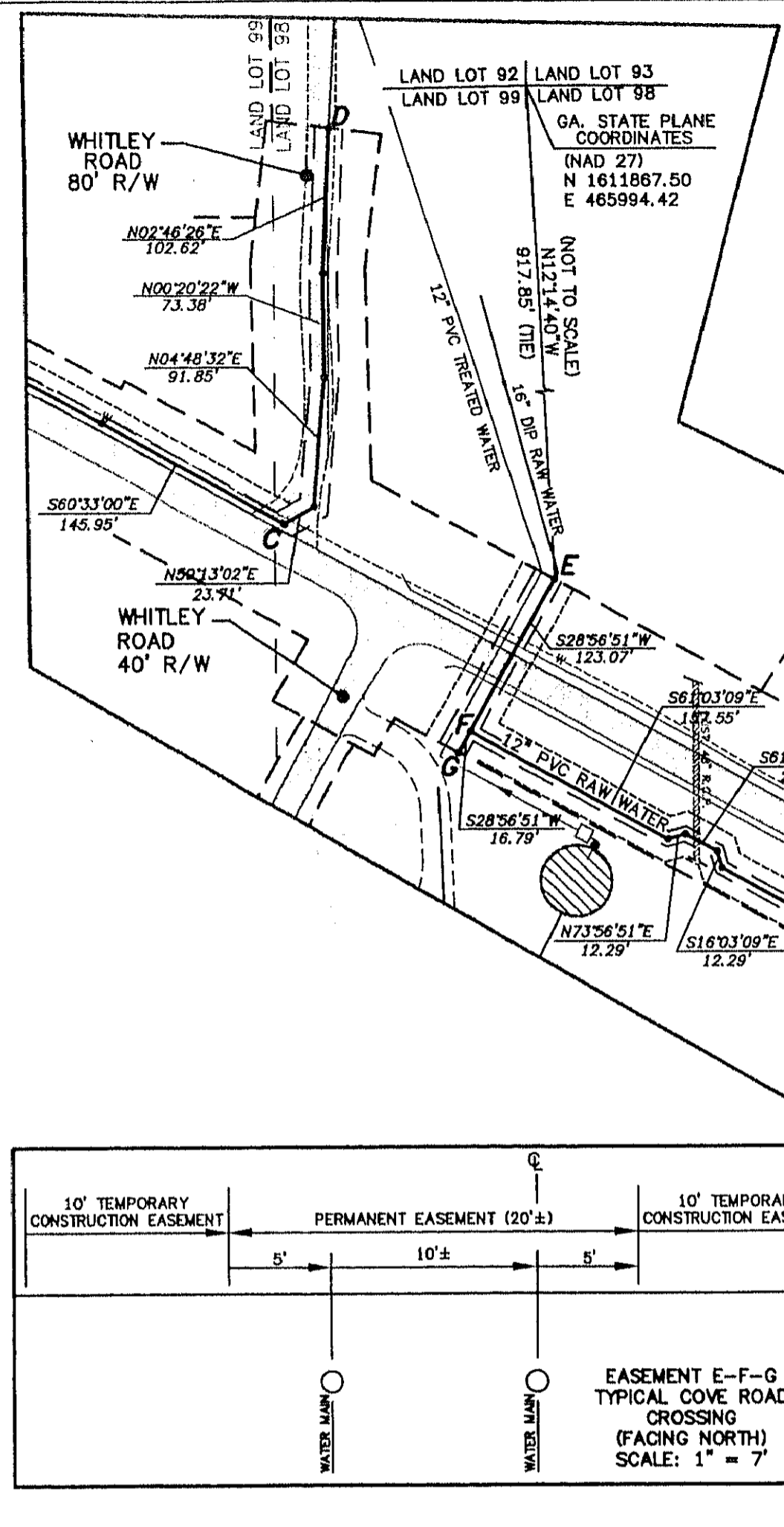
9-2-04



GRID GEORGIA WEST ZONE (NAD 27)



PICKENS COUNTY FILED FOR RECORD ON THE 16th DAY OF NOV 2004 9:30 A.M. RECORDED THIS 16th DAY OF NOV 2004 BOOK NO. 00 PAGE 74
JOYCE CANTRELL CSC



COMPILED EASEMENT PLAT
PREPARED FOR

BIG CANOE UTILITIES CO., INC.

SHOWING EASEMENTS TO BE OBTAINED ALONG RIGHTS OF WAY OF PICKENS COUNTY, LOCATED IN LAND LOTS 91, 92, 99, 98, 93 & 60, 2nd SECTION 4th DISTRICT,

PICKENS COUNTY, GEORGIA
AUGUST 25, 2004

SCALE: 1" = 100'
100' 50' 0 100' 200'

SCALE IN FEET
PREPARED BY

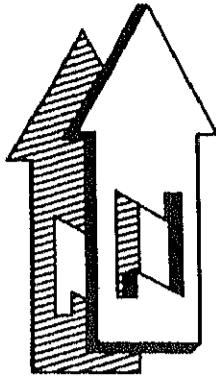
Cranston, Robertson & Whitehurst, P.C.

452 ELLIS STREET - P.O. DRAWER 2546 - AUGUSTA, GEORGIA 30903
ENGINEERS - PLANNERS - SURVEYORS
PH: (706) 722-1588 EMAIL: crw@crwpc.com FACSIMILE: (706) 722-8379

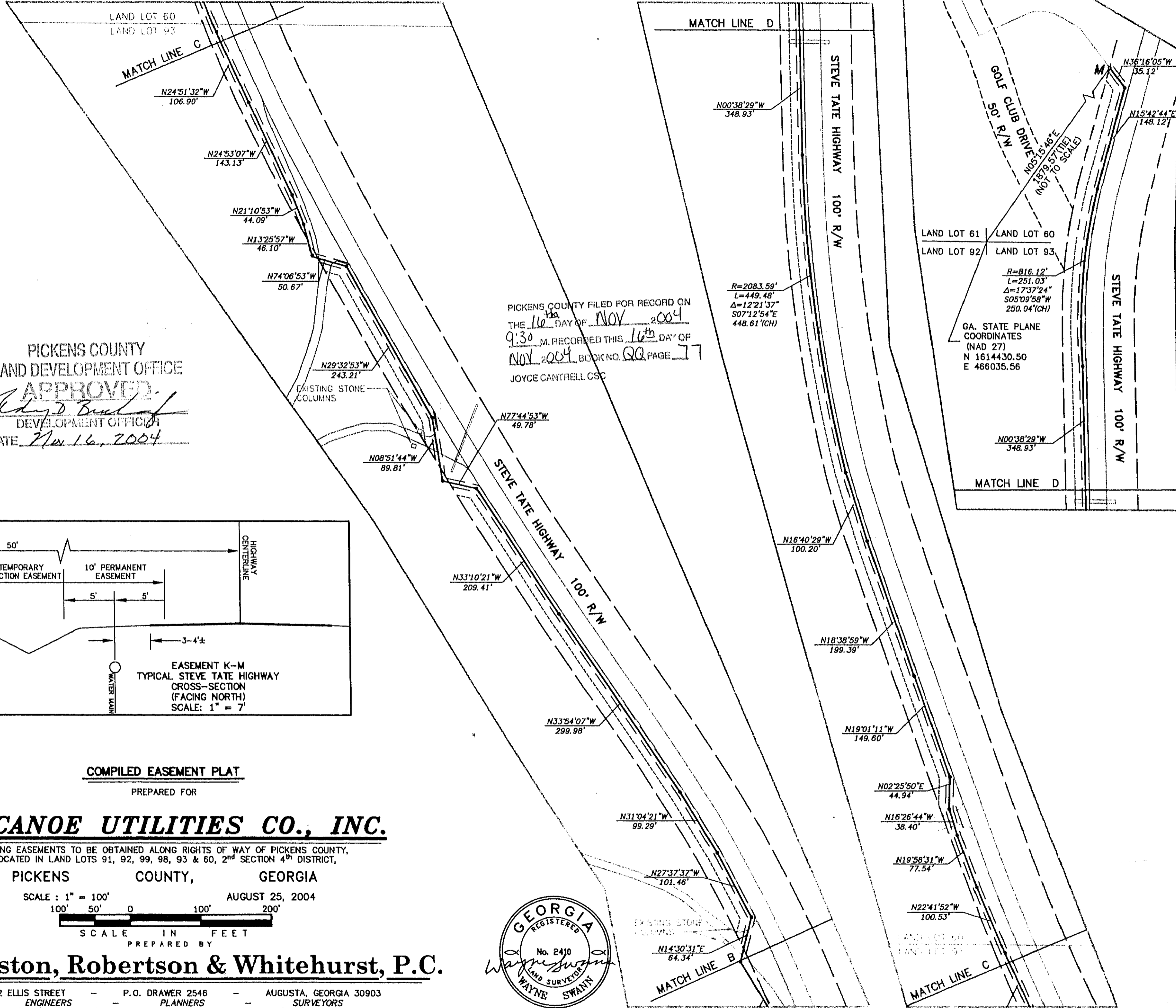
PICKENS COUNTY
LAND DEVELOPMENT OFFICE
APPROVED
Development Officer
DATE: 11/16/2004



9-2-04



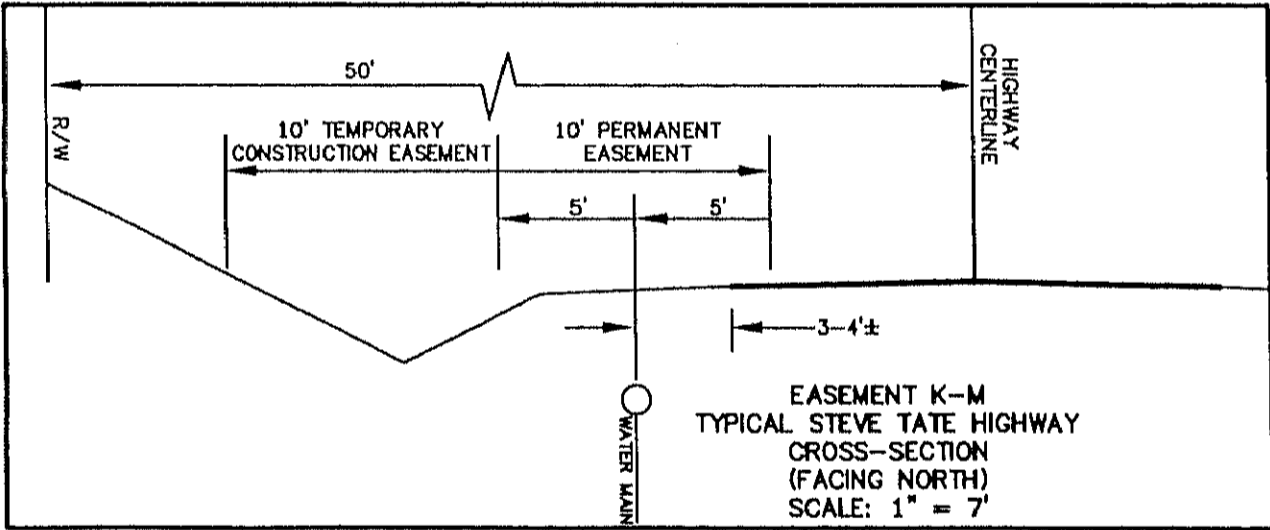
GRID
GEORGIA WEST
ZONE
(NAD 27)



PICKENS COUNTY
LAND DEVELOPMENT OFFICE
APPROVED
Edy D. Bruch
DEVELOPMENT OFFICER
DATE Nov 16, 2004

PICKENS COUNTY FILED FOR RECORD ON
THE 16th DAY OF NOV 2004
9:30 A.M. RECORDED THIS 16th DAY OF
NOV 2004, BOOK NO. 90 PAGE 17
JOYCE CANTRELL, CSC

LAND LOT 61 | LAND LOT 60
LAND LOT 92 | LAND LOT 93
R=816.12'
L=251.03'
Δ=173°24'
S05°08'58\"W
250.04'(CH)
GA. STATE PLANE
COORDINATES
(NAD 27)
N 1614430.50
E 466035.56



COMPILED EASEMENT PLAT
PREPARED FOR

BIG CANOE UTILITIES CO., INC.

SHOWING EASEMENTS TO BE OBTAINED ALONG RIGHTS OF WAY OF PICKENS COUNTY,
LOCATED IN LAND LOTS 91, 92, 99, 98, 93 & 60, 2nd SECTION 4th DISTRICT,

PICKENS COUNTY, GEORGIA

SCALE: 1" = 100' AUGUST 25, 2004



SCALE IN FEET
PREPARED BY

Cranston, Robertson & Whitehurst, P.C.

452 ELLIS STREET - P.O. DRAWER 2546 - AUGUSTA, GEORGIA 30903
ENGINEERS - PLANNERS - SURVEYORS
PH: (706) 722-1588 EMAIL: crw@crwpc.com FACSIMILE: (706) 722-8379



9-2-04